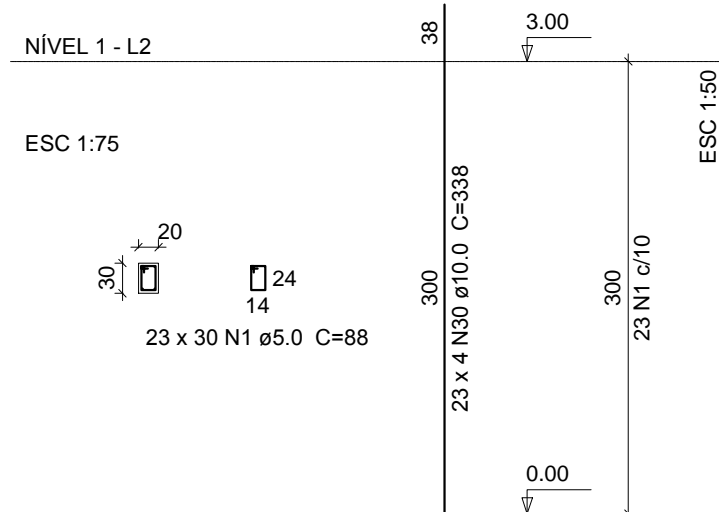
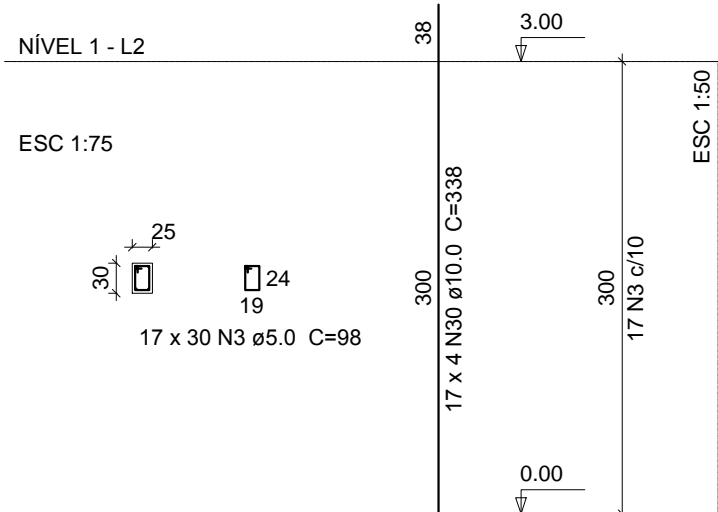


P1=P2=P3=P5=P7=P9=P11=P13=P17=P21=P23=P25=P29=P32=P36=P38=P42=P44=P48=P50=P51=P52=P53

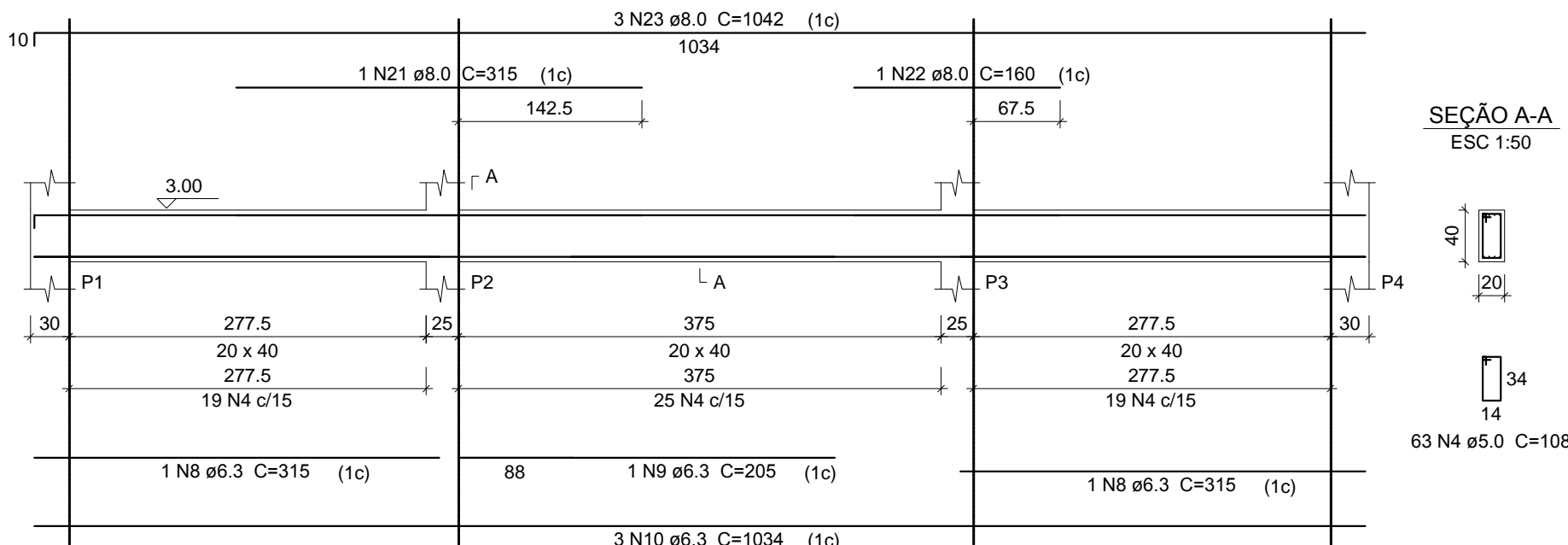


P4=P6=P8=P10=P12=P14=P18=P22=P24  
P26=P30=P33=P37=P39=P43=P45=P49



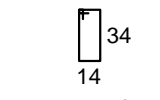
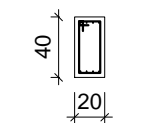
### V1 (20 x 40)

ESC 1:50



#### SEÇÃO A-A

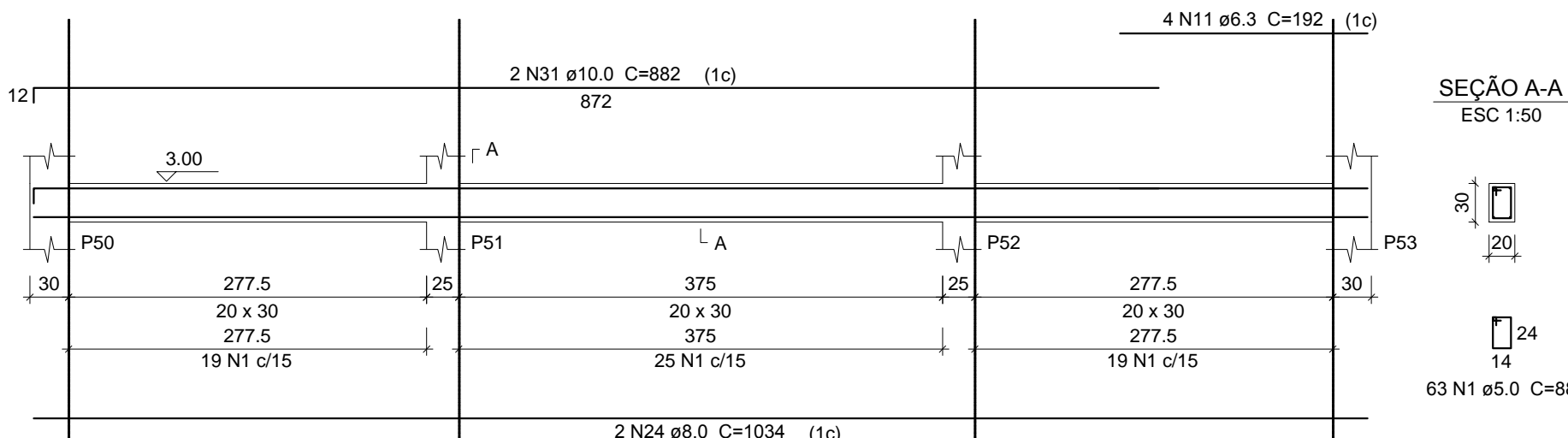
ESC 1:50



63 N4 ø5.0 C=108

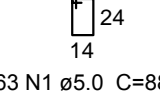
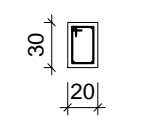
### V9 (20 x 30)

ESC 1:50



#### SEÇÃO A-A

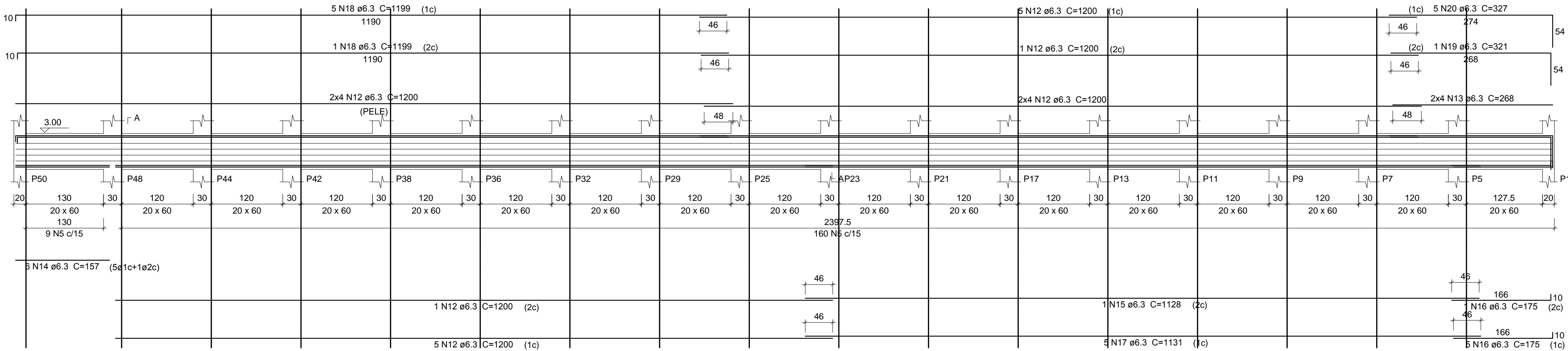
ESC 1:50



63 N1 ø5.0 C=88

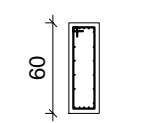
### V11 (20 x 60)

ESC 1:50



#### SEÇÃO A-A

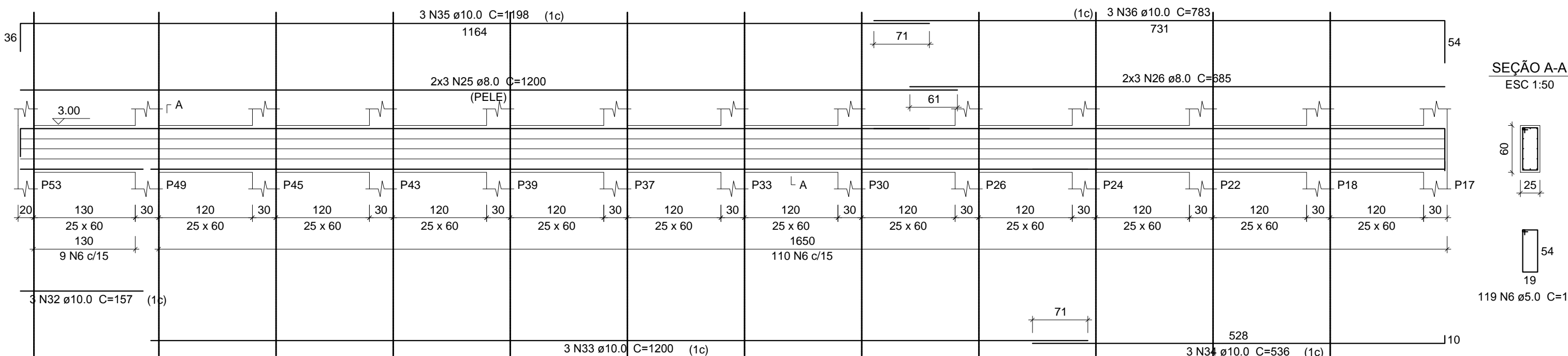
ESC 1:50



169 N5 ø5.0 C=148

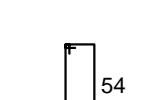
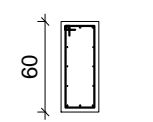
### V12 (25 x 60)

ESC 1:50



#### SEÇÃO A-A

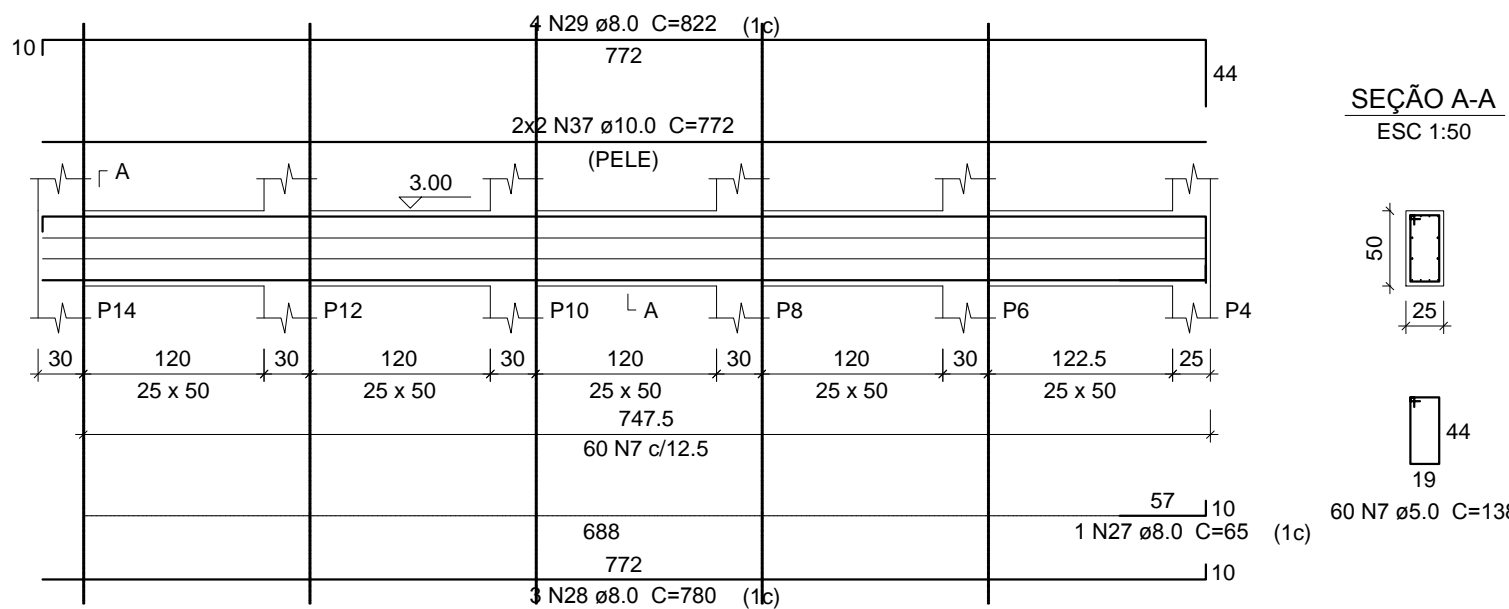
ESC 1:50



119 N6 ø5.0 C=158

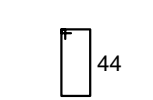
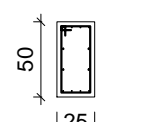
### V13 (25 x 50)

ESC 1:50



#### SEÇÃO A-A

ESC 1:50



60 N7 ø5.0 C=138

### Relação do aço (Vigas)

V12	N	DIAM	Q	UNIT (cm)	C.TOTAL (cm)
CA60	1	5.0	63	88	5544
CA50	4	5.0	63	108	6804
	5	5.0	169	148	25012
	6	5.0	119	158	18802
	7	5.0	60	138	8280
	8	6.3	2	315	630
	9	6.3	1	205	205
	10	6.3	3	1034	3102
	11	6.3	4	192	768
	12	6.3	28	1200	33600
	13	6.3	8	268	2144
	14	6.3	6	157	942
	15	6.3	1	1128	1128
	16	6.3	6	175	1050
	17	6.3	5	1131	5655
	18	6.3	6	1199	7194
	19	6.3	1	321	321
	20	6.3	5	327	1635
	21	8.0	1	315	315
	22	8.0	1	160	160
	23	8.0	3	1042	3126
	24	8.0	2	1034	2068
	25	8.0	6	1200	7200
	26	8.0	6	685	4110
	27	8.0	1	65	65
	28	8.0	3	780	2340
	29	8.0	4	822	3288
	31	10.0	2	882	1764
	32	10.0	3	157	471
	33	10.0	3	1200	3600
	34	10.0	3	536	1608
	35	10.0	3	1198	3594
	36	10.0	3	783	2349
	37	10.0	4	772	3088

### Resumo do aço

AÇO	DIAM	C.TOTAL (m)	PESO (kg)
CA50	6.3	583.8	143.1
	8.0	226.8	89.6
	10.0	164.8	101.7
CA60	5.0	644.5	99.3
PESO TOTAL			
CA50	334.4		
CA60	99.3		

Vol. de concreto total (C-25) = 6.86 m³

Área de forma total = 88.36 m²

### Relação do aço (Pilares)

40xP1

AÇO	N	DIAM	Q	UNIT (cm)	C.TOTAL (cm)
CA60	1	5.0	690	88	60720
CA50	3	5.0	510	98	49980
	30	10.0	160	338	54080

### Resumo do aço

AÇO	DIAM	C.TOTAL (m)	PESO (kg)
CA50	10.0	540.8	333.7
CA60	5.0	1107	170.5
PESO TOTAL			
CA50	333.7		
CA60	162.6		

Vol. de concreto total (C-25) = 7.97 m³

Área de forma total = 125.10 m²

ESTADO DE MATO GROSSO  
PREFEITURA MUNICIPAL DE BARRA DO GARÇAS  
CNPJ 03.439.235/0001-00  
Rua Cerúlis, 522 Centro - Barra do Garças MT - CEP 78.000-000



SECRETARIA MUNICIPAL DE  
PLANEJAMENTO URBANO E OBRAS

COORDENADAS: 15°53'44.70"S 52°16'28.40"O

Prancha:

6/15

### APROVAÇÃO

Obra : CONSTRUÇÃO DE SALA DE TIROS DO CENTRO  
INTEGRADO DE CAPACITAÇÃO POLICIAL

Conteúdo : PROJETO ESTRUTURAL - DETALHAMENTO DE VIGAS E PILARES DO  
PAV. NÍVEL 01

Local : 2º BATALHÃO DE POLÍCIA MILITAR - BARRA DO GARÇAS  
RUA FRANCISCO LIRA, BAIRRO SEMA MARQUES-BARRA DO GARÇAS/MT

Propriedade : Prefeitura Municipal Barra do Garças

Autor do projeto:

Responsável Técnico

Área à Ampliar: 268,06 m²

Escala: Indicadas

Data: Agosto/2021

Folha: A1